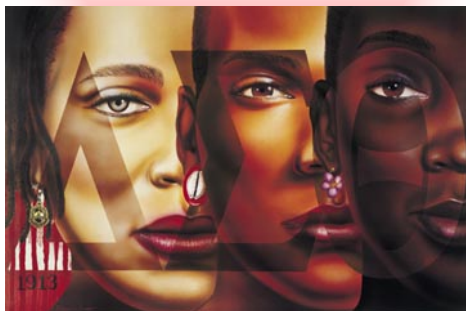


**DELTA SIGMA THETA  
SORORITY, INCORPORATED  
MONTGOMERY (AL) ALUMNAE  
CHAPTER**

*...A service organization*

*..Serving the Metro-Montgomery  
area since 1937*



*Delta Sigma Theta Sorority, Inc. has become the largest organization founded and directed by African-American women with membership exceeding 200,000 members. Since the inception of Delta Sigma Theta Sorority, Inc., membership has spread rapidly with 950 plus chapters in the United States as well as Haiti, Japan, Liberia, the Virgin Islands, the Caribbean, Bermuda, the Bahamas, West Germany, and the Republic of Korea.*

**FIVE POINT THRUST  
&  
NATIONAL INVOLVEMENT**

---

Since its establishment, Delta Sigma Theta has clearly established itself as a service organization that strives to confront the problems of African Americans and, hence, all Americans. A wide range of programs addressing education, health, international awareness, and strengthening of the African- American family has emerged and evolved over the years. In realizing its mission, Delta Sigma Theta provides an extensive array of public service through its Five Point Program Thrust:

- ▲ Educational Development
- ▲ Economic Development
- ▲ International Awareness and Involvement
- ▲ Physical and Mental Health
- ▲ Political Awareness and Involvement

**CRÈME DE LA CRÈME, LTD.**



**MONTGOMERY (AL)  
ALUMNAE  
CHAPTER**



**DELTA SIGMA  
THETA SORORITY,  
INC.**

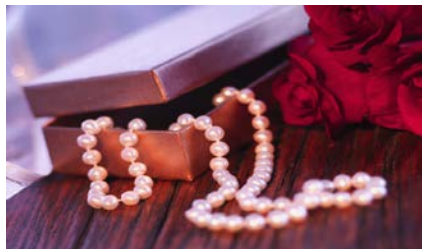
Contact:  
info@montgomeryalumnae.org  
P.O. Box 5144  
Montgomery, AL 36103

**Miss Crème de la Crème  
Crème Pearls**

## PURPOSE OF MISS CRÈME DE LA CRÈME

Crème de la Crème is committed to providing experiences for the contestants that will develop her personal talents, leadership, character, intellect and self esteem.

Over a series of months, contestants participate in workshops and various activities designed to foster positive experiences and memories. The culmination is Crème de la Crème, Ltd. a cultural and social extravaganza where contestants vie for the title of Miss Crème de la Crème. It is also Montgomery Alumnae Chapter's major fundraiser, therefore each contestant is asked to work along with her assigned group and the community to reach her financial goal.



## CONTESTANT REQUIREMENTS

- ▲ Must be a junior or senior in high school.
- ▲ Must have a minimum 2.5 grade point average.
- ▲ Be involved in various school and community activities.
- ▲ Meet the minimum fundraising requirements.
- ▲ Complete and submit an application form.
- ▲ Attend all scheduled practices for the production.
- ▲ Attend all cultural affairs activities, workshops, and community service activities.
- ▲ Ensure all financial deadlines are understood and maintain contact with her sponsor and the Crème Coordinator.

## AWARDS

Each contestant who fulfills all requirements has the opportunity to be:

- ▲ Awarded certificates, trophies, and/or scholarships.
- ▲ Crowned Miss Crème de la Crème.

## BENEFITS

- ▲ Bonding activities with other young ladies of the same interests and goals.
- ▲ Participation in workshops: etiquette, interview skills, professional and educational preparation.
- ▲ Experiences received from participating in these activities will have a lifetime effect.
- ▲ Each contestant will receive two passes to the production.
- ▲ Miss Crème de la Crème will represent DST in the annual Turkey Day Classic Parade.